



Brighton

LEISURE DETAILS



CLASSIC FULL-DAY

**LONDON - WEST END**

Take in the major sights on a guided walking tour of this exciting and historic capital. See many famous London landmarks, including Big Ben, Trafalgar Square, Piccadilly Circus and Buckingham Palace.

Packed meal included. No admissions are necessary in this tour. The total duration of this trip is approximately 9 hours, of which 3 hours is travel time. (Group visits to particular attractions are available upon request.)

**CANTERBURY**

A stunning city with breathtaking architecture and world famous buildings including the awe-inspiring cathedral. Visit the Westgate Towers Museum and Viewpoint, the largest surviving city gate in England.

Packed meal and admission to the Westgate Towers Museum and Viewpoint is included. Total duration of this trip is approximately 9 hours of which 3.5 hours is travel time.

**TOWER OF LONDON & SOUTH BANK**

Visit one of the most famous fortified buildings in the world. Afterwards take a walk along London's beautiful riverside stretch taking in some of the city's sights.

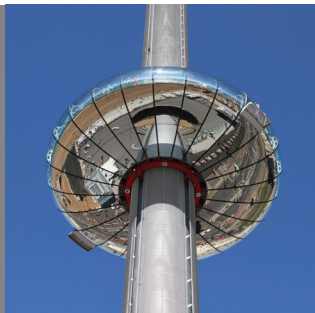
3 & 4 week students only. Packed meal and admission to the Tower of London is included. Total duration of this trip is approximately 9 hours, of which 3 hours is travel time.

**PORTSMOUTH**

Go up the 170m high Spinnaker Tower for a beautiful view of the coast and historic Dockyards, home to HMS Victory, probably the most famous battle ship in Britain. Portsmouth is also great for shopping!

4 week students only. Packed meal included. Admission to the Spinnaker Tower is included. The total duration of this trip is approximately 9 hours, of which 3 hours is travel time.

CLASSIC HALF-DAY

**BRITISH AIRWAYS i360**

Take a flight to the skies to enjoy breathtaking 360 degree views all over Brighton and Sussex. Opened in summer 2016, the i360 is becoming one of the most popular attractions in Brighton.

Packed meal included to eat on Brighton beach in the evening. Admission to the i360 is included. This excursion is approximately 5 hours, of which up to 1 hour is travel time.

**ROYAL PAVILION & THE LANES**

This extraordinary former royal seaside retreat is noted for its exotic oriental appearance. You will also explore 'the Lanes' - the historic quarter of Brighton with interesting shops and cafes.

Packed meal included to eat on Brighton beach in the evening. Admission to the Royal Pavilion is included. This excursion is approximately 5 hours, of which up to 1 hour is travel time.

**SEVEN SISTERS COUNTRY PARK**

Half-day excursion to Seven Sisters Country Park located within the South Downs National Park. See the famous chalk cliffs, explore the unspoilt coastline and enjoy the gorgeous views.

3 & 4 week students only. The total duration of this trip is approximately 5 hours, of which 2 hours is travel time.

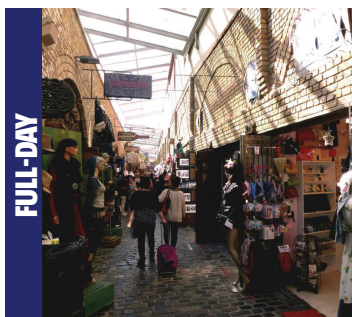
**BRIGHTON TOY MUSEUM**

Situated beneath the Victorian arches of Brighton railway station, this toy and model museum is home to over ten thousand toys and models, including priceless model train collections, radio controlled aircrafts and many antique toys.

4 week students only. Admission to Brighton Toy Museum is included. The total duration of this trip is approximately 4 hours, of which 1 hour is travel time.



Sightseeing Summer School Excursions



FULL-DAY

CAMDEN MARKET & LONDON EYE

Camden is one of the most interesting areas of London and is the home of many UK music stars. The market is a fantastic shopping experience with clothes and food from all over the world, as well as many quirky London souvenirs.

Packed meal included. The total duration of this trip is approximately 5.5 hours, of which 2 hours is travel time.



MADAME TUSSAUDS & BAKER STREET

Spend the afternoon with your favourite film, sport and music stars at this popular wax museum. You can have your photograph taken with the British Royal family and finish your visit with the spectacular Spirit of London ride.

Packed meal included. Entrance to Madame Tussauds is included. The total duration of this trip is approximately 5.5 hours, of which 2 hours is travel time.



BRITISH MUSEUM & OXFORD STREET

First you will visit the British Museum with one of the largest and most comprehensive collections in existence. After the museum, you will walk to Oxford Street for some world-famous shopping.

Packed meal included. The total duration of the trip is approximately 9 hours, of which 3.5 hours is travel time.



HALF-DAY

HOVE LAGOON WATER SPORTS

What better place to try exciting water sports than at the beautiful English seaside? Spend a couple of hours trying your hand at paddle boarding and wind surfing with a view of the famous Brighton Pier.

All equipment is provided. The total duration of this trip is approximately 4 hours, of which 1 hour is travel time.



LEWES

Climb to the top of this 1000 year old Norman Castle for stunning panoramic views across Sussex. Afterwards explore the steep and cobbled streets of Lewes and pop into one of the speciality shops throughout the town selling home made chocolate, candles and craftwork.

Admission to Lewes Castle is included. The total duration of this trip is approximately 5 hours, of which 1 hour is travel time.



BRIGHTON SEALIFE CENTRE

Half-day excursion to the oldest operating aquarium in the world. Discover a magical underwater world, from face-to-face encounters with sharks to a hands-on rock pool experience. Under the rainforest canopy you will also discover one of the largest species of snake, as well as deadly piranhas and poisonous dart frogs.

Admission to Brighton Sealife Centre is included. The total duration of this trip is approximately 5 hours, of which 1 hour is travel time.



Optional Excursions



LONDON SCIENCE MUSEUM, NATURAL HISTORY MUSEUM & HARRODS

Visit South Kensington, home to London's Science and Natural History Museums. Enjoy a walk to Knightsbridge for some shopping, including a trip to world-famous department store, Harrods.

Packed meal included. The total duration of this trip is approximately 9 hours, of which up to 4 hours is travel time.



LONDON EYE & MADAME TUSSAUDS

See the city from the tallest point in central London and then stand next to your favourite celebrities at the famous wax works museum.

Packed meal included. The total duration of this trip is approximately 9 hours, of which 3.5 hours is travel time. Long waiting times may be experienced.



BRITISH MUSEUM & OXFORD STREET

First you will visit the British Museum with one of the largest and most comprehensive collections in existence. After the museum, you will walk to Oxford Street for some world-famous shopping.

Packed meal included. The total duration of the trip is approximately 9 hours, of which 3.5 hours is travel time.



HOVE LAGOON WATER SPORTS

What better place to try exciting water sports than at the beautiful English seaside? Spend a couple of hours trying your hand at paddle boarding and wind surfing with a view of the famous Brighton Pier.

All equipment is provided. The total duration of this trip is approximately 4 hours, of which 1 hour is travel time.



LEWES

Climb to the top of this 1000 year old Norman Castle for stunning panoramic views across Sussex. Afterwards explore the steep and cobbled streets of Lewes and pop into one of the speciality shops throughout the town selling home made chocolate, candles and craftwork.

Admission to Lewes Castle is included. The total duration of this trip is approximately 5 hours, of which 1 hour is travel time.



BRIGHTON SEALIFE CENTRE

Half-day excursion to the oldest operating aquarium in the world. Discover a magical underwater world, from face-to-face encounters with sharks to a hands-on rock pool experience. Under the rainforest canopy you will also discover one of the largest species of snake, as well as deadly piranhas and poisonous dart frogs.

Admission to the Brighton Sealife Centre is included. The total duration of this trip is approximately 5 hours, of which 1 hour is travel time.

Terms and Conditions

Classic Summer School includes one full-day and one half-day excursions per week. Sightseeing Summer School includes two full-day and two half-day excursions per week. Students can arrive at the beginning of week 1, 2, 3, 4, 5 or 6. 3 and 4 week students have alternative excursions to avoid repetition. Students staying for 4 weeks or fewer will never do the same excursion twice, unless requested. Transport by public transport or chartered coach is included. LAL reserves the right to select either public or private transport for included, Sightseeing and optional excursions. Admissions are included where required.

Optional excursions are half-day or full-day at an additional cost, and must be booked and paid for by the student prior to their commencement. If bookings are made before the course, payment must be made prior to arrival in GB Pounds. Other optional excursions may be arranged if booked at least two weeks before arrival. Optional excursions are subject to availability and minimum or maximum numbers. We also reserve the right to cancel or alter excursions due to unforeseen circumstances. Refunds are only given if an excursion is cancelled by LAL.

To book any optional additions, or for further information, please contact info@lalschools.com



Brighton

CALENDAR 2018

JULY

1	Sunday	School opens	WEEK 1
2	Monday		
3	Tuesday	Royal Pavilion and the Lanes British Airways i360	
4	Wednesday	Lewes (Sightseeing and optional excursion)	
5	Thursday		
6	Friday	Madame Tussauds & Baker Street (Sightseeing excursion)	
7	Saturday	London West End Canterbury	
8	Sunday	British Museum & Oxford Street (optional excursion)	WEEK 2
9	Monday		
10	Tuesday	British Airways i360 Royal Pavilion and the Lanes	
11	Wednesday	Brighton Sealife Centre (Sightseeing and optional excursion)	
12	Thursday	Camden Market & London Eye (Sightseeing excursion)	
13	Friday		
14	Saturday	Canterbury London West End	
15	Sunday	London Science Museum, Natural History Museum & Harrods (optional excursion)	WEEK 3
16	Monday		
17	Tuesday	Royal Pavilion and the Lanes British Airways i360 Seven Sisters Country Park (3 & 4 week students)	
18	Wednesday	Hove Lagoon Water Sports (Sightseeing and optional excursion)	
19	Thursday		
20	Friday	British Museum & Oxford Street (Sightseeing excursion)	
21	Saturday	London West End Canterbury Tower of London & South Bank (3 week students)	
22	Sunday	London Eye & Madame Tussauds (optional excursion)	WEEK 4
23	Monday		
24	Tuesday	British Airways i360 Royal Pavilion and the Lanes Brighton Toy Museum (4 week students)	
25	Wednesday	Lewes (Sightseeing and optional excursion)	
26	Thursday		
27	Friday	Madame Tussauds & Baker Street (Sightseeing excursion)	
28	Saturday	Canterbury London West End Portsmouth (4 week students)	
29	Sunday	British Museum & Oxford Street (optional excursion)	WEEK 5
30	Monday		
31	Tuesday	Royal Pavilion and the Lanes British Airways i360	

AUGUST

1	Wednesday	Brighton Sealife Centre (Sightseeing and optional excursion)	WEEK 6
2	Thursday		
3	Friday	Camden Market & London Eye (Sightseeing excursion)	
4	Saturday	London West End Canterbury	
5	Sunday	London Science Museum, Natural History Museum & Harrods (optional excursion)	
6	Monday		
7	Tuesday	British Airways i360 Royal Pavilion and the Lanes Seven Sisters Country Park (3 week students only)	
8	Wednesday	Hove Lagoon Water Sports (Sightseeing and optional excursion)	WEEK 6
9	Thursday		
10	Friday	British Museum & Oxford Street (Sightseeing excursion)	
11	Saturday	Canterbury London West End Tower of London & South Bank (3 week students only)	
12	Sunday	School closes	